

AN ISO 9001 REGISTERED COMPANY

Series 72 Electri-SAFE®

*Electro-Hydraulic Actuator for
Quarter-turn Valves and Dampers*

Here is a high quality actuator with all the features you've hoped for in a Fail-Safe Electric Actuator.

Worcester's new patented Series 72 *Electri-SAFE* actuator is a powerful, compact and economical means of electrically actuating valves in your process while meeting your safety requirements. *Electri-SAFE* is an Electro-Hydraulic actuator that operates like a spring-return pneumatic actuator. You get the same speed and reliability you are used to with pneumatic actuators, but far more cost effectively.



➔ Simple 2-wire 120VAC control

➔ Watertight, corrosion resistant enclosure Type 4, 4x, 7, 9, 12

➔ ISO 5211 Mounting — mount it on any ISO designed quarter-turn valve



2 SPDT 15A switches for position indication



Return Stroke Solenoid

Other Features & Benefits

- Wide, temperature range -25°F to +150°F.
- Fail Safe on power failure.
- Fast moving valve closure in as little as one second.
- Long operational life.
- Mount *Electri-SAFE* in any position. There is no hydraulic reservoir.
- No clutches, battery packs or clock springs.
- Torque up to 900 in. lbs.

Approvals*:

CSA approved for Type 1 General Purpose Indoor Locations
 Factory Mutual approved for Liquid & Gas Safety Shut-off Service
 *Contact Flowserve for valves and actuators that require FM approval.



Oil production water dump application



- ➔ Powerful, fast spring-return
Fail-Safe action, open or closed
- ➔ Two SPDT 15A switches for
position indication
- ➔ Maintenance-free hydraulic system
with no reservoir - mount in any position

Technical Specifications

Sizes: 1572 and 2072

Torque Output:	- Stroke -	
	Open/Hydraulic	Close/Spring
Actuator	Start/End	Start/End
1572	800/540 in-lb	800/540 in-lb
2072	1300/900 in-lb	1300/900 in-lb

90° Rotation Time at 70°F ambient temperature:
 1572 - 5 sec. open/1 sec. close
 2072 - 8 sec. open/3 sec. close

Enclosure: Watertight, corrosion resistant, Type 4, 4x, 7, 9, 12 — Cast aluminum, anodized. Class I Division 1 & 2, Group B, C and D; Class II Division 1 & 2, Group E, F and G; Class III Division 1 & 2

Voltage: 120 Volt AC
 240 Volt AC
 24 VDC

Motor Amps: 2.5 amps running; 5 amps locked rotor

Connection: Two male output shafts

Overload Protection: Thermal overload protection with automatic reset

Travel Stop Limit Switches: Two single pole/double throw (SPDT) switches - independent, internally mounted and adjustable

Temperature Limits: -25°F to +150°F*

Lubrication: Actuator is filled with synthetic hydraulic oil and needs no extra lubrication

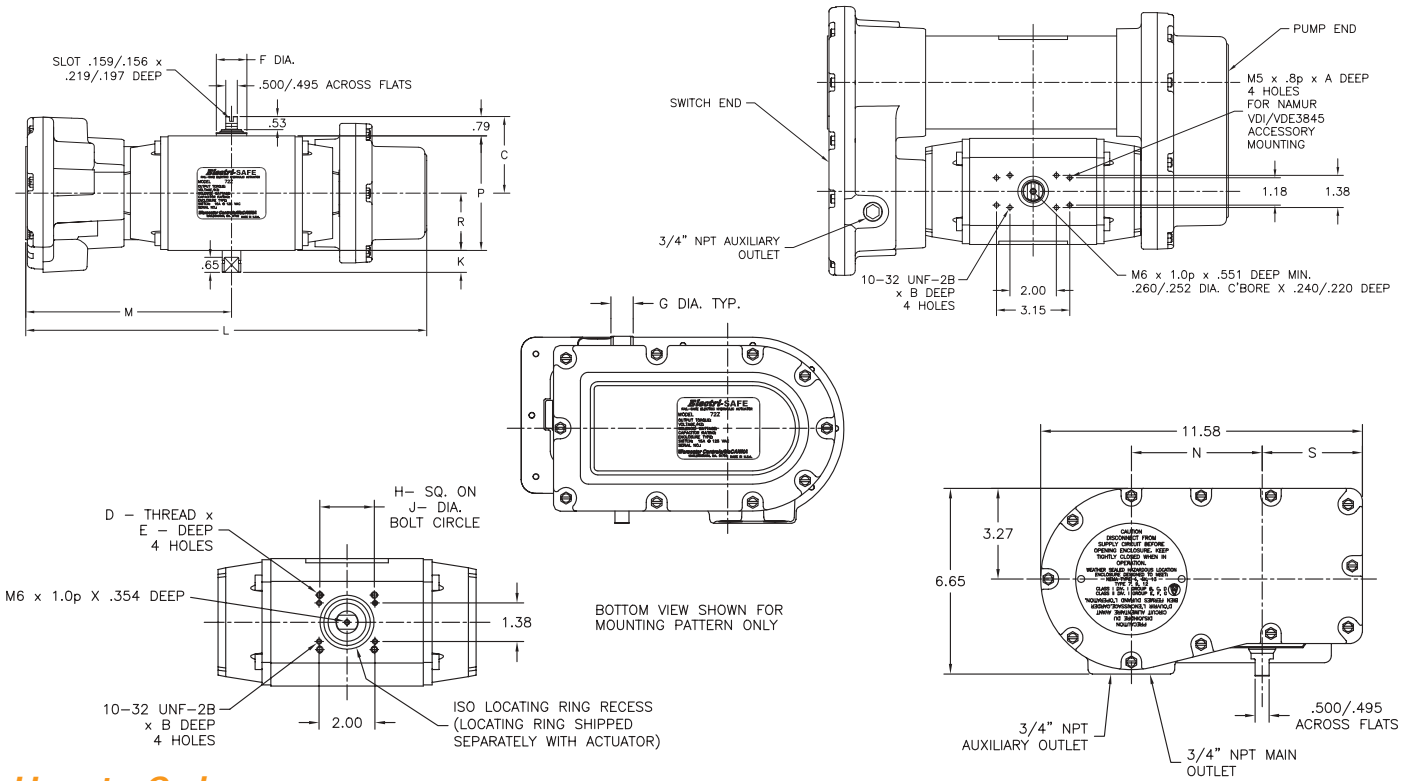
Conduit Connections: Three - 3/4" NPT connections are provided

Weight: 1572 - 45 lb.
 2072 - 55 lb.

* Consult your Worcester Controls representative for cycle times at specific temperatures.

Dimensions inches (mm)

ACT. SIZE	A	B	C	D	E	F	G	H	J	K	L	M	N	P	R	S	ISO 5211
1572	.28 (7.1)	.31 (7.9)	2.84 (72.1)	M6	.28 (7.1)	1.02 (25.9)	.63 (16.0)	1.39 (35.3)	1.97 (50.0)	.87 (22.1)	15.69 (399)	8.02 (204)	4.86 (123)	4.09 (104)	2.05 (52.1)	3.44 (87.4)	F05
2072	.32 (8.1)	.32 (8.1)	3.25 (82.6)	M8	.35 (8.9)	1.31 (33.3)	.80 (20.3)	1.95 (49.5)	2.76 (70.1)	.85 (21.6)	17.27 (439)	8.81 (224)	4.69 (119)	4.92 (125)	2.46 (62.3)	3.61 (91.7)	F07



How to Order

Actuator Size	Variations	Product Series	Enclosure	Voltage
15	Blank - Std., Fail Closed 9 - Fail Open	72	Z - Enclosure Type 4, 4x, 7, 9, 12 Combined Locations	120A - 120VAC 50/60 Hz 240A-240VAC 50/60 Hz 24VDC
20	B - Breather - Drain Plug			

Due to continuous development of our product range, we reserve the right to alter the product information and specifications contained in this brochure as required.

Worcester® is a registered trademark of Worcester Control Valves. • Electri-SAFE® is a registered trademark of Worcester Control Valves.
Flowserve® is a registered trademark of Flowserve Corporation.

Flowserve Corporation has established industry leadership in the design and manufacture of its products. When properly selected, this Flowserve product is designed to perform its intended function safely during its useful life. However, the purchaser or user of Flowserve products should be aware that Flowserve products might be used in numerous applications under a wide variety of industrial service conditions. Although Flowserve can (and often does) provide general guidelines, it cannot provide specific data and warnings for all possible applications. The purchaser/user must therefore assume the ultimate responsibility for the proper sizing and selection, installation, operation, and maintenance of Flowserve products. The purchaser/user should read and understand the Installation Operation Maintenance (IOM) instructions included with the product, and train its employees and contractors in the safe use of Flowserve products in connection with the specific application.

While the information and specifications contained in this literature are believed to be accurate, they are supplied for informative purposes only and should not be considered certified or as a guarantee of satisfactory results by reliance thereon. Nothing contained herein is to be construed as a warranty or guarantee, express or implied, regarding any matter with respect to this product. Because Flowserve is continually improving and upgrading its product design, the specifications, dimensions and information contained herein are subject to change without notice. Should any question arise concerning these provisions, the purchaser/user should contact Flowserve Corporation at any one of its worldwide operations or offices.

For more information about Flowserve Corporation, contact www.flowserve.com or call USA 1 800 225 6989.

FLOWSERVE CORPORATION
FLOW CONTROL DIVISION
1978 Foreman Drive
Cookeville, Tennessee 38501 USA
Phone: 931 432 4021
Facsimile: 931 432 5518