

# Flow-Tek®

A Subsidiary of BRAY INTERNATIONAL, Inc.



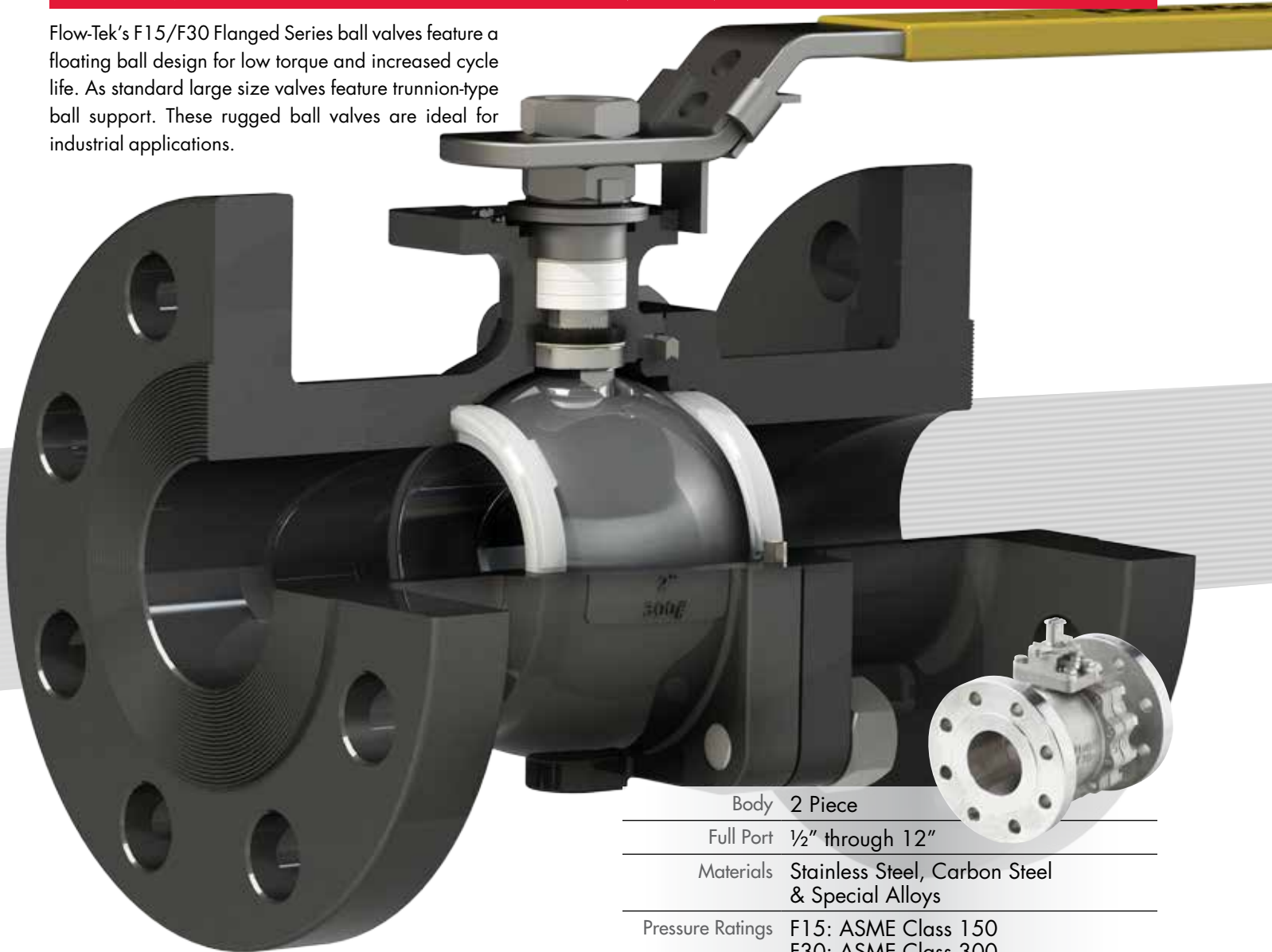
## FLANGED SERIES

### 2 PIECE FLANGED FULL PORT ½" - 12"

F15 - ASME Class 150 | F30 - ASME Class 300

# FLANGED SERIES BALL VALVES

Flow-Tek's F15/F30 Flanged Series ball valves feature a floating ball design for low torque and increased cycle life. As standard large size valves feature trunnion-type ball support. These rugged ball valves are ideal for industrial applications.



Body 2 Piece

Full Port 1/2" through 12"

Materials Stainless Steel, Carbon Steel  
& Special Alloys

Pressure Ratings F15: ASME Class 150  
F30: ASME Class 300

## SECURE MOUNT

Flanged Series valves offer ease of automation due to an integrally cast actuator mounting pad which complies with ISO 5211 through 2" valve sizes.

## STEM SEALS

Flanged Series 1/2"– 2" valves feature live-loaded, self-adjusting primary and secondary sealing. Utilizing Belleville washers, the stem seal automatically adjusts to compensate for changes in temperature and normal wear. 2 1/2"– 12" valves utilize an independent packing gland which can be easily adjusted without removing mounting hardware or operator. The packing gland is contoured to more uniformly distribute the load across the packing. The primary stem seal is a combination of a thrust washer and a thrust washer protector. An adjustable stem packing creates a secondary seal between the stem and body. The stem packing is composed of RPTFE V-rings as standard – graphite stem packing is standard on all Fire Safe valves.

## BALL

Flow-Tek balls are precision machined and mirror finished for bubble-tight shut off and less operating torque. As an added safety feature, a hole in the stem slot of each ball equalizes pressure between the body cavity and the line media flow.

## BODY

1/2"– 4" valve bodies are investment cast and solution annealed/normalized for the highest quality and added strength. All body castings are marked with a foundry heat number for full traceability. Carbon Steel bodies are phosphate coated for increased corrosion resistance.

## SEAT

Flow-Tek's seat design ensures bi-directional, bubble-tight sealing with low operating torque. All resilient seats feature relief slots or seat O.D. clearance to relieve pressure past the upstream seat, and positive preloading to ensure low pressure/vacuum sealing.

## STEM ASSEMBLIES

Flow-Tek manufactures heavy duty, high quality stems with double "D" connection to ball and operator mounting. Stems are mated with the ball to ensure positive contact. All Flow-Tek stems are internal entry and blowout proof for maximum safety.



### SMART STEM Valve Sizes ¼" through 2 ½"

Flow-Tek's Interchangeable Family of valves feature strong, large diameter stems with live-loaded, self-adjusting sealing utilizing belleville washers which automatically adjust to compensate for changes in temperature and wear. Manual adjustments which can cause damage to the seal and seat are not required. The assembly is secured by a saddle-type lock washer which prevents stem nuts from unthreading in high cycle automation applications.

### STEM PACKING

An adjustable V-ring design creates a multiple seal between the stem and body. Each stem assembly is composed of three or four (dependent on valve size) rings providing a very high cycle life by resisting creep and cold flow. The Thrust Washer and the Thrust Washer Protector combine to provide a primary seal, reduce torque and prevent galling. This arrangement is a Flow-Tek exclusive.

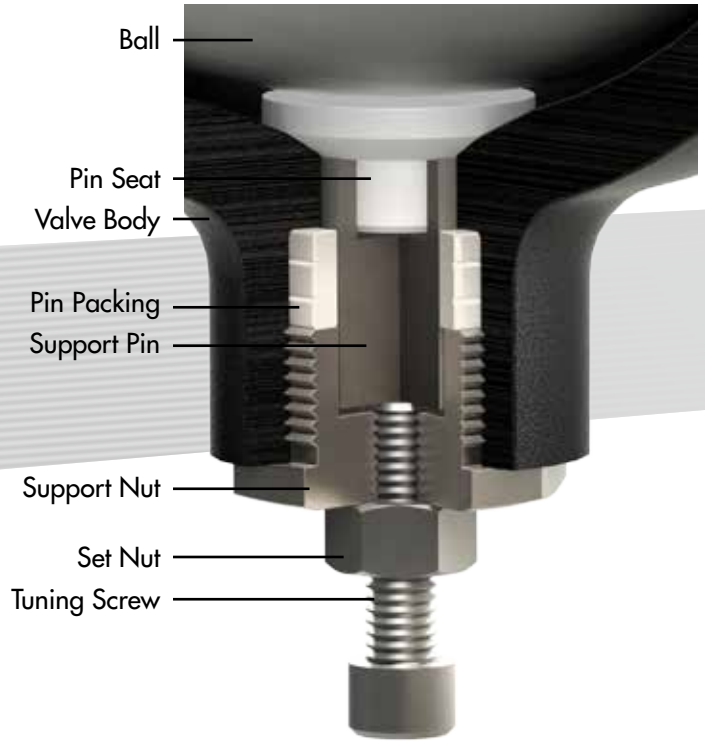
## FIRE SAFE - Certified to API 607 4<sup>th</sup> Edition

Flanged Series valves with graphite stem seals have been thoroughly fire tested and meet these standards.

In the event of a fire, after heat destroys the primary resilient seat, the ball makes contact with the secondary metal seat, forming a secure seal. The body seal, composed of Stainless Steel and Graphite wound into a spiral, prevents external leakage. The Graphite stem rings prevent stem leakage.

## BALL SUPPORT

As standard, larger sized valves feature trunnion-type ball support. This support helps to maintain continuous contact between the ball and seats, preventing seat damage and blow-by. The results are less seat wear, lower torque, and longer service life. This feature is standard on 10"-12" Model F15 and 6"-12" Model F30 valves.



## LOCKING DEVICE

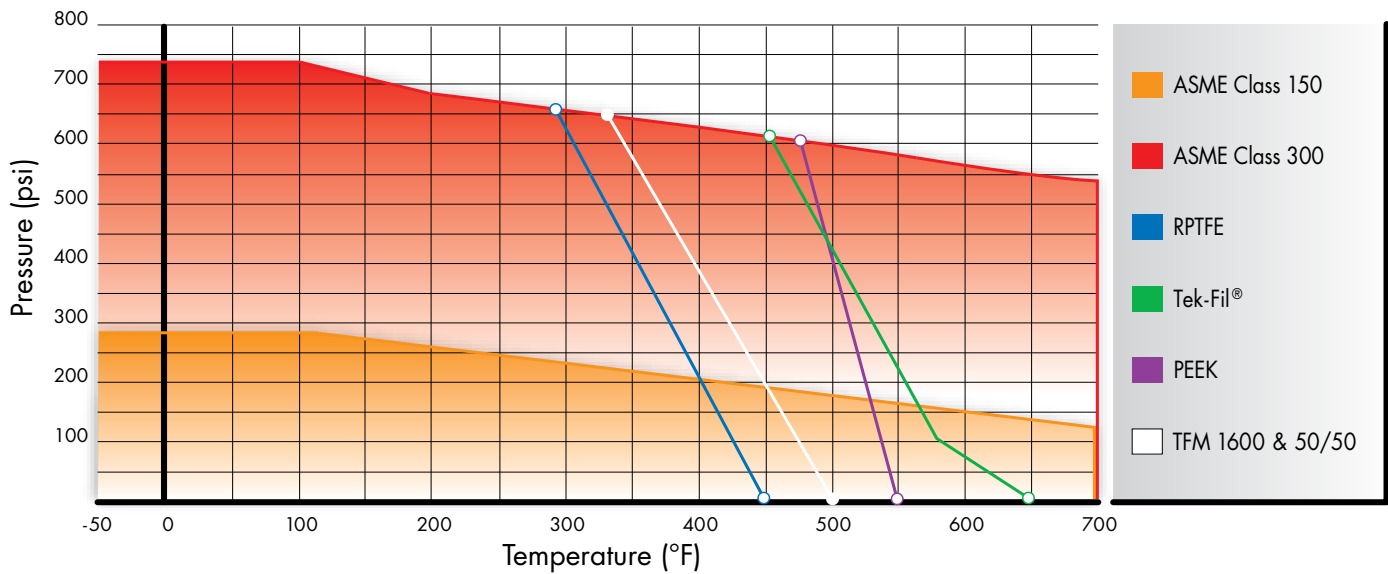
All manually operated valves feature a locking device to prevent accidental movement of ball position. Valves ½"-2" feature a safety trigger that locks the handle in the open or closed position. The handle lock can be bypassed, if needed, with a small bolt through the handle in the release position.



On all sizes a Padlock can be added to secure the handle in position, preventing unwanted movement of the ball.



## PRESSURE / TEMPERATURE



Carbon Steel valves limited to -20°F

## STEAM SERVICE PRESSURE RATINGS: WSP

|            | TFM Seats |     | Tek-Fil Seats |     | PEEK Seats |     |
|------------|-----------|-----|---------------|-----|------------|-----|
|            | PSI       | °F  | PSI           | °F  | PSI        | °F  |
| Class 150: | 150       | 365 | 190           | 383 | 170        | 374 |
| Class 300: | 150       | 365 | 425           | 454 | 425        | 454 |

Vacuum Service to 29.9 inches Hg. gauge.

## SEAT SELECTION

A wide range of seat materials are available to meet most applications. The standard seat is TFM 1600. Options include:

- RPTFE
- StainlessSteel/PTFE (50/50)
- UHMWPE
- Virgin PTFE
- PEEK
- Tek-Fil® (carbon/graphite filled TFM)
- Full metal seats
- Cavity Fillers

PEEK seats offer high pressure/temperature capability. Tek-Fil® seats offer reduced torque in high temperature, high cycle, and steam service applications. TFM 1600 seats offer the exceptional chemical resistance of PTFE plus lower porosity and permeability, improved temperature range and reduced valve torques.



# COMPONENTS & MATERIALS

| ITEM / NAME                 | STAINLESS STEEL             | CARBON STEEL             | QTY. |
|-----------------------------|-----------------------------|--------------------------|------|
| 1. Body                     | ASTM A351 Gr CF8M           | ASTM A216 Gr WCB         | 1    |
| 2. End Cap                  | ASTM A351 Gr CF8M           | ASTM A216 Gr WCB         | 1    |
| 3. Ball                     | ASTM A351 Gr CF8M           |                          | 1    |
| 4. Seat                     | TFM 1600                    |                          | 2    |
| 5. Stem                     | ASTM A479 Type 316          |                          | 1    |
| 6. Body Seal                | Spiral Wound (316/Graphite) |                          | 1    |
| 7. Body Nut                 | ASTM A194 Gr 8              |                          | *    |
| 8. Body Stud                | ASTM A193 B8                | ASTM A193 B7             | *    |
| 9. Anti-Static Device       | SS304                       |                          | 2    |
| 10. Packing Protector       | PEEK                        |                          | 1    |
| 11. Thrust Washer Protector | PEEK                        |                          | 1    |
| 12. Thrust Washer           | Tek-Fil                     |                          | 1    |
| 13. Stem Bearing            | 15% RPTFE                   |                          | 1    |
| 14. Stem Packing            | RPTFE/Graphite              |                          | 3/1  |
| 15. Packing Gland           | ASTM A167 Type 304          |                          | 1    |
| 16. Packing Follower        | ASTM A351 Gr CF8M           | ASTM A216 Gr WCB         | 1    |
| 17. Gland Bolt              | SS304                       |                          | 2    |
| 18. Belleville Washer       | SS301                       |                          | 2    |
| 19. Tab Lock Washer         | SS304                       |                          | 1    |
| 20. Travel Stop Housing     | CF8M                        | WCB                      | 1    |
| 21. Housing Bolt            | SS304                       | Alloy Steel              | 4    |
| 22. Travel Stop             | SS304                       | Zinc Plated Carbon Steel | 1    |
| 23. Travel Stop Sleeve      | ASTM A167 Type 304          |                          | 1    |
| 24. Travel Stop Bolt        | SS304                       |                          | 1    |
| 25. Handle                  | SS304/**Ductile Iron        |                          | 1    |
| 26. Lock Nut                | ASTM A167 Type 304          |                          | 2    |
| 27. Handle Bolt             | Carbon Steel                |                          | 1    |
| 28. Handle Sleeve           | Vinyl through 2"            |                          | 1    |
| 29. Locking Device          | SS304                       |                          | 1    |
| 30. Snap Ring               | Nickel Plated Carbon Steel  |                          | 2    |

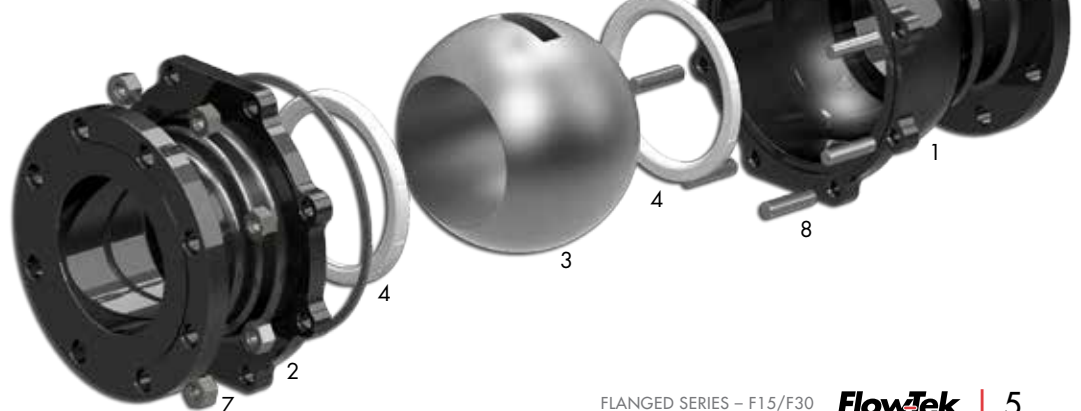
\*Quantity depends on valve size.

\*\* 2 1/2" and larger valves.

Flow-Tek offers the seat, body seal, thrust washer and stem packing as recommended spare parts. These parts are available as a packaged repair kit.

## 2 1/2" – 12" VALVES

Ball Support is included on 10"-12" F15 valves and 6"-12" F30 valves.



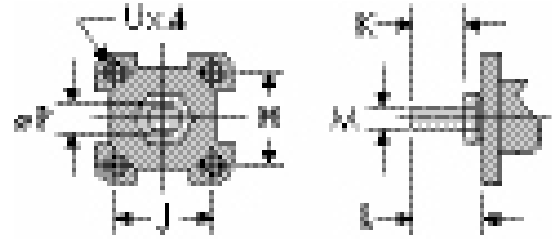
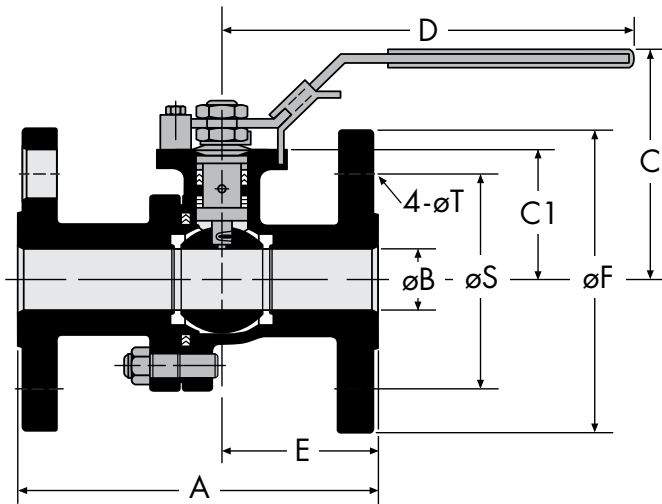
## 1/2" – 2" VALVES

Carbon Steel bodies on valve sizes 1/2" – 4" are Black Phosphate Coated.

All Stainless Steel bodies are solution annealed/normalized.



# F15/F30 DIMENSIONS 1/2" – 2" VALVES (15mm - 50mm)



## DIMENSIONS – Secure Mount

| Size<br>ins. (mm) | H    | J    | F0  | BC<br>DIA. | K    | L    | M    | øP   | U<br>UNC |
|-------------------|------|------|-----|------------|------|------|------|------|----------|
| 1/2               | 1.17 | 1.17 | F04 | 1.65       | 0.31 | 0.61 | 0.25 | 0.37 | #10-24   |
| 3/4               | 1.17 | 1.17 | F04 | 1.65       | 0.31 | 0.61 | 0.25 | 0.37 | #10-24   |
| 1                 | 1.39 | 1.39 | F05 | 1.97       | 0.43 | 0.82 | 0.31 | 0.43 | 1/4-20   |
| 1-1/2             | 1.95 | 1.95 | F07 | 2.76       | 0.55 | 0.95 | 0.37 | 0.62 | 5/16-18  |
| 2                 | 1.95 | 1.95 | F07 | 2.76       | 0.55 | 0.95 | 0.37 | 0.62 | 5/16-18  |
| 15                | 29.7 | 29.7 | F04 | 41.9       | 7.9  | 15.5 | 6.0  | 9.4  | #10-24   |
| 20                | 29.7 | 29.7 | F04 | 41.9       | 7.9  | 15.5 | 6.0  | 9.4  | #10-24   |
| 25                | 35.0 | 35.0 | F05 | 50.0       | 10.9 | 20.8 | 7.9  | 10.9 | 1/4-20   |
| 40                | 49.5 | 49.5 | F07 | 70.0       | 14.0 | 24.0 | 9.0  | 15.8 | 5/16-18  |
| 50                | 49.5 | 49.5 | F07 | 70.0       | 14.0 | 24.0 | 9.0  | 15.8 | 5/16-18  |

## Model F15 – Class 150

| Size<br>inches | A     | øB   | C     | C1   | D     | E    | øF    | øS    | N / øT   | C <sub>v</sub> | Torque* | Weight |
|----------------|-------|------|-------|------|-------|------|-------|-------|----------|----------------|---------|--------|
| 1/2            | 4.25  | 0.59 | 2.60  | 1.54 | 6.50  | 1.79 | 3.50  | 2.38  | 4 x 0.62 | 32             | 36      | 4      |
| 3/4            | 4.62  | 0.79 | 2.91  | 1.67 | 6.50  | 2.01 | 3.88  | 2.75  | 4 x 0.62 | 60             | 65      | 5      |
| 1              | 5.00  | 0.98 | 3.43  | 2.05 | 7.87  | 2.13 | 4.25  | 3.12  | 4 x 0.62 | 105            | 95      | 10     |
| 1-1/2          | 6.50  | 1.49 | 4.23  | 2.60 | 9.84  | 2.76 | 5.00  | 3.88  | 4 x 0.62 | 275            | 230     | 14     |
| 2              | 7.00  | 1.97 | 4.53  | 2.95 | 10.43 | 3.07 | 6.00  | 4.75  | 4 x 0.75 | 500            | 390     | 20.5   |
| 15             | 108.0 | 15.0 | 66.0  | 39.0 | 165.0 | 45.5 | 88.9  | 60.5  | 4 x 15.8 | 28             | 4       | 2      |
| 20             | 117.0 | 20.0 | 73.9  | 42.4 | 165.0 | 51.0 | 98.6  | 69.9  | 4 x 15.8 | 52             | 7       | 2      |
| 25             | 127.0 | 24.9 | 87.0  | 52.0 | 199.9 | 54.0 | 108.0 | 79.0  | 4 x 15.8 | 91             | 11      | 4.5    |
| 40             | 165.0 | 37.9 | 107.0 | 66.0 | 249.9 | 70.0 | 127.0 | 98.6  | 4 x 15.8 | 238            | 26      | 6      |
| 50             | 177.8 | 50.0 | 115.0 | 74.9 | 264.9 | 78.0 | 152.0 | 120.7 | 4 x 19.0 | 433            | 44      | 9      |

## Model F30 – Class 300

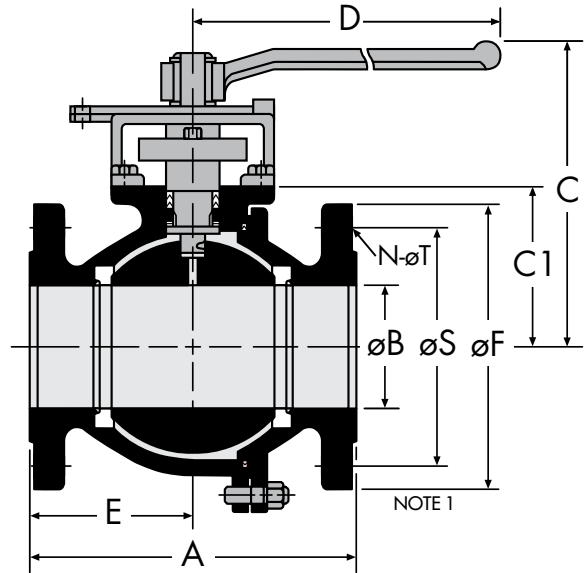
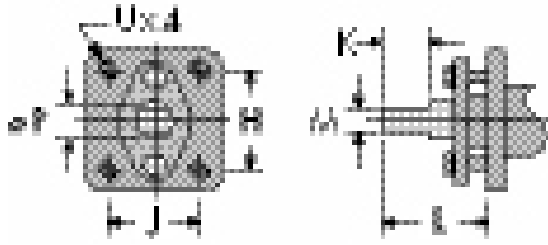
| Size<br>inches | A     | øB   | C     | C1   | D     | E     | øF    | øS    | N / øT   | C <sub>v</sub> | Torque* | Weight |
|----------------|-------|------|-------|------|-------|-------|-------|-------|----------|----------------|---------|--------|
| 1/2            | 5.50  | 0.59 | 2.60  | 1.57 | 6.50  | 2.44  | 3.75  | 2.62  | 4 x 0.62 | 32             | 40      | 5      |
| 3/4            | 6.00  | 0.79 | 2.91  | 1.67 | 6.50  | 2.72  | 4.62  | 3.25  | 4 x 0.75 | 60             | 70      | 7      |
| 1              | 6.50  | 0.98 | 3.43  | 2.05 | 7.87  | 2.91  | 4.88  | 3.50  | 4 x 0.75 | 105            | 108     | 10     |
| 1-1/2          | 7.50  | 1.49 | 4.23  | 2.60 | 9.84  | 3.27  | 6.12  | 4.50  | 4 x 0.88 | 275            | 270     | 19     |
| 2              | 8.50  | 1.97 | 4.53  | 2.95 | 10.43 | 3.94  | 6.50  | 5.00  | 8 x 0.75 | 500            | 445     | 25     |
| 15             | 139.7 | 15.0 | 66.0  | 39.9 | 165.0 | 62.0  | 95.0  | 66.6  | 4 x 15.8 | 28             | 5       | 2      |
| 20             | 152.0 | 20.0 | 73.9  | 42.0 | 165.0 | 69.0  | 117.0 | 82.6  | 4 x 19.0 | 52             | 8       | 3      |
| 25             | 165.0 | 24.9 | 87.0  | 52.0 | 199.9 | 73.9  | 124.0 | 88.9  | 4 x 19.0 | 91             | 12      | 5      |
| 40             | 190.5 | 37.9 | 107.0 | 66.0 | 249.9 | 83.0  | 155.5 | 114.0 | 4 x 22.0 | 238            | 31      | 9      |
| 50             | 215.9 | 50.0 | 115.0 | 74.9 | 264.9 | 100.0 | 165.0 | 127.0 | 8 x 19.0 | 433            | 50      | 11     |

Face to Face dimensions meet ASME B16.10 long pattern.

\*Torque at maximum rated pressure, clean water, TFM 1600 seating material. Other seat materials exhibit different torques.

Please refer to TB 1005 for specific torques.

# F15/F30 DIMENSIONS 2½" – 12" VALVES (65mm - 300mm)



## DIMENSIONS – Secure Mount

|              | Size ins. (mm)     | H     | J     | F0  | BC DIA. | K                 | L                 | M    | ØP                | U UNC  |
|--------------|--------------------|-------|-------|-----|---------|-------------------|-------------------|------|-------------------|--------|
| INCHES       | 2-1/2 - 4          | 3.54  | 1.87  | F10 | —       | 1.75              | 3.10              | 0.67 | 1.10              | 1/2-13 |
|              | 6                  | 3.37  | 3.37  | F12 | 4.77    | 1.61              | 3.58              | 1.02 | 1.71              | 1/2-13 |
|              | 8 <sup>1</sup>     | 3.37  | 3.37  | F12 | 4.77    | 2.13 <sup>1</sup> | 3.58 <sup>1</sup> | 1.02 | 1.71              | 1/2-13 |
|              | 10-12 <sup>2</sup> | 4.53  | 4.53  | F16 | 6.40    | 2.15              | 3.86 <sup>2</sup> | 1.38 | 1.97 <sup>2</sup> | 5/8-11 |
| MILLI-METERS | 65 - 100           | 89.9  | 47.5  | F10 | —       | 44.5              | 78.7              | 17.0 | 27.9              | 1/2-13 |
|              | 150                | 85.6  | 85.6  | F12 | 121.0   | 40.9              | 90.9              | 25.9 | 43.0              | 1/2-13 |
|              | 200                | 85.6  | 85.6  | F12 | 121.0   | 54.0              | 90.9              | 25.9 | 43.0              | 1/2-13 |
|              | 250-300            | 115.0 | 115.0 | F16 | 162.6   | 54.6              | 98.0              | 35.0 | 50.0              | 5/8-11 |

## Model F15 – Class 150

|             | Size inches | A     | ØB    | C     | C1    | D     | E     | ØF    | ØS    | N / ØT    | C <sub>v</sub> | Torque* | Weight |
|-------------|-------------|-------|-------|-------|-------|-------|-------|-------|-------|-----------|----------------|---------|--------|
| INCHES      | 2-1/2       | 7.50  | 2.56  | 6.22  | 3.39  | 15.35 | 3.08  | 7.00  | 5.50  | 4 x 0.75  | 780            | 500     | 36     |
|             | 3           | 8.00  | 2.99  | 6.54  | 3.66  | 15.35 | 3.74  | 7.50  | 6.00  | 4 x 0.75  | 1,150          | 650     | 45     |
|             | 4           | 9.00  | 3.99  | 7.20  | 4.39  | 15.35 | 4.47  | 9.00  | 7.50  | 8 x 0.75  | 2,100          | 1,505   | 65     |
|             | 6           | 15.50 | 5.98  | 11.22 | 7.17  | 15.35 | 7.62  | 11.00 | 9.50  | 8 x 0.88  | 5,000          | 3,250   | 157    |
|             | 8           | 18.00 | 7.87  | 12.72 | 7.60  | 38.98 | 8.35  | 13.50 | 11.75 | 8 x 0.88  | 9,600          | 4,750   | 290    |
|             | 10          | 21.00 | 9.84  | 13.70 | 9.88  | 38.98 | 10.47 | 16.00 | 14.25 | 12 x 1.00 | 15,000         | 13,700  | 500    |
| MILLIMETERS | 12          | 24.00 | 11.81 | 15.28 | 11.46 | 38.98 | 12.01 | 19.00 | 17.00 | 12 x 1.00 | 21,000         | 19,700  | 700    |
|             | 65          | 190.5 | 65.0  | 158.0 | 86.0  | 389.9 | 78.0  | 177.8 | 139.7 | 4 x 19.0  | 675            | 56      | 16     |
|             | 80          | 203.0 | 76.0  | 166.0 | 93.0  | 389.9 | 95.0  | 190.5 | 152.0 | 4 x 19.0  | 995            | 73      | 20     |
|             | 100         | 228.6 | 101.0 | 182.9 | 111.5 | 389.9 | 113.5 | 228.6 | 190.5 | 8 x 19.0  | 1,817          | 170     | 29.5   |
|             | 150         | 393.7 | 151.9 | 284.9 | 182.0 | 389.9 | 193.6 | 279.0 | 241.0 | 8 x 22.0  | 4,325          | 367     | 71     |
|             | 200         | 457.0 | 199.9 | 323.0 | 193.0 | 990.0 | 212.0 | 342.9 | 298.5 | 8 x 22.0  | 8,304          | 537     | 132    |
| MILLIMETERS | 250         | 533.0 | 249.9 | 348.0 | 251.0 | 990.0 | 265.9 | 406.0 | 362.0 | 12 x 25.0 | 12,975         | 1,548   | 227    |
|             | 300         | 609.6 | 300.0 | 388.0 | 291.0 | 990.0 | 305.0 | 482.6 | 431.8 | 12 x 25.0 | 18,165         | 2,226   | 318    |

## Model F30 – Class 300

|             | Size inches | A     | ØB    | C     | C1    | D     | E     | ØF    | ØS    | N / ØT    | C <sub>v</sub> | Torque* | Weight |
|-------------|-------------|-------|-------|-------|-------|-------|-------|-------|-------|-----------|----------------|---------|--------|
| INCHES      | 2-1/2       | 9.50  | 2.56  | 6.22  | 3.39  | 15.35 | 4.18  | 7.50  | 5.88  | 8 x 0.88  | 780            | 600     | 44     |
|             | 3           | 11.12 | 2.99  | 6.54  | 3.72  | 15.35 | 5.57  | 8.25  | 6.62  | 8 x 0.88  | 1,150          | 850     | 61     |
|             | 4           | 12.00 | 3.99  | 7.20  | 4.35  | 15.35 | 5.96  | 10.00 | 7.88  | 8 x 0.88  | 2,100          | 2,600   | 96     |
|             | 6           | 15.88 | 5.98  | 11.22 | 7.19  | 38.98 | 7.60  | 12.50 | 10.62 | 12 x 0.88 | 5,000          | 5,300   | 243    |
|             | 8           | 19.75 | 7.87  | 12.72 | 8.64  | 38.98 | 9.33  | 15.00 | 13.00 | 12 x 1.00 | 9,600          | 7,600   | 430    |
|             | 10          | 22.38 | 9.84  | 13.70 | 9.69  | 38.98 | 11.18 | 17.50 | 15.25 | 16 x 1.12 | 15,000         | 17,800  | 610    |
| MILLIMETERS | 12          | 25.50 | 11.81 | 15.28 | 11.26 | 38.98 | 12.80 | 20.50 | 17.75 | 16 x 1.25 | 21,000         | 24,800  | 950    |
|             | 65          | 241.0 | 65.0  | 158.0 | 86.0  | 389.9 | 106.0 | 190.5 | 149.0 | 8 x 22.0  | 675            | 68      | 20     |
|             | 80          | 282.5 | 76.0  | 166.0 | 94.5  | 389.9 | 141.5 | 209.6 | 168.0 | 8 x 22.0  | 995            | 96      | 27.7   |
|             | 100         | 304.8 | 101.0 | 182.9 | 110.5 | 389.9 | 151.0 | 254.0 | 200.0 | 8 x 22.0  | 1,817          | 294     | 44     |
|             | 150         | 403.0 | 151.9 | 285.0 | 182.6 | 990.0 | 193.0 | 317.5 | 269.8 | 12 x 22.0 | 4,325          | 599     | 110    |
|             | 200         | 501.7 | 199.9 | 323.0 | 219.5 | 990.0 | 237.0 | 381.0 | 330.0 | 12 x 25.0 | 8,304          | 859     | 195    |
| MILLIMETERS | 250         | 568.5 | 249.9 | 348.0 | 246.0 | 990.0 | 284.0 | 444.5 | 387.0 | 16 x 28.5 | 12,975         | 2,011   | 277    |
|             | 300         | 647.7 | 300.0 | 388.0 | 286.0 | 990.0 | 325.0 | 520.7 | 450.9 | 16 x 31.8 | 18,165         | 2,802   | 431    |

<sup>1</sup> For 8" F30: K=1.61, L=3.42

<sup>2</sup> For 10" F30: L=3.82, P=2.165

NOTE 1: Ball Support as shown on Page 2 is included on 10"-12" F15 and 6"-12" F30 valves.

NOTE 2: 2½", 3" & 4" valves feature a NAMUR stem slot for ease of limit switch mounting.

Face to Face dimensions meet ASME B16.10 long pattern.

\*Torque at maximum rated pressure, clean water, TFM 1600 seating material. Other seat materials exhibit different torques.

Please refer to TB 1005 for specific torques.

## **BRAY INTERNATIONAL, INC**

### **USA**

Houston, TX. +281.894.5454

## **FLOW-TEK**

### **USA**

Houston, TX +832.912.2300

### **CHINA**

Hangzhou, Zhejiang +86.571.828.52200

### **BRAZIL**

Paulinia SP-Brazil +55.19.3517.5555

## **BRAY CONTROLS / FLOW-TEK**

### **BRAY CONTROLS USA**

Houston, TX +832.912.2300

### **ARGENTINA**

Buenos Aires + 54.11.4362.0666

### **BENELUX**

Heerhugowaard +31.72.572.1410

### **BRAZIL**

Paulinia SP-Brazil +55.19.3517.6161

### **CANADA**

Montréal +514.344.2729

### **CHILE**

Santiago +56.2739.2966

### **CHINA**

Hangzhou, Zhejiang +86.571.828.52200

### **GERMANY**

Krefeld +49.2151.53360

### **INDIA**

Gujarat +91.2667.664444

### **MEXICO**

Zapopan, Jalisco, +52.33.3836.4460

### **PACIFIC**

Melbourne, Australia +613.9580.9755

### **PERU**

Lima +511.251.0251

### **POLAND**

Oświęcim +48.33.842.1968

### **UNITED KINGDOM**

Inchinnan +44.141.812.5199

### **VIETNAM**

Ho Chi Minh City +84.8.3742.3428

## **RITEPRO**

### **CANADA,**

Montréal +514.324.8900

### **CHINA,**

Hangzhou, Zhejiang +86.571.828.52200

All statements, technical information, and recommendations in this bulletin are for general use only. Consult Flow-Tek representatives or factory for the specific requirements and material selection for your intended application. The right to change or modify product design or product without prior notice is reserved.

Flow-Tek® is a registered trademark of Flow-Tek, Inc.  
© 2013 Flow-Tek, Inc. All rights reserved.

F-2400\_EN\_F15/30\_2013-11



### ▲ **FLOW-TEK - USA - Office & Manufacturing**

**Global manufacturing,  
service around the corner**

To serve you locally, each region maintains a  
factory certified sales and service network  
for all Bray International products.



### ▼ **WORLD HEADQUARTERS - BRAY INTERNATIONAL, INC. - USA**



# **Flow-Tek®**

A Subsidiary of BRAY INTERNATIONAL, Inc.  
8323 N. Eldridge Pkwy #100 Houston, Texas 77041  
832.912.2300 Fax: 832.912.2301 www.flow-tek.com